

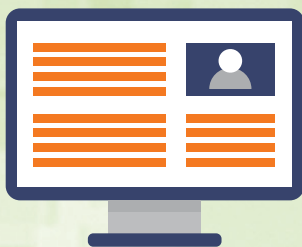
PREVENTING CHILD SEXUAL ABUSE IN YOUTH SERVING ORGANIZATIONS

The Centers for Disease Control and Prevention (CDC) has developed six key components for preventing child sexual abuse within youth serving organizations.

COMPONENT 5: Responding to Inappropriate Behavior, Breaches in Policy, and Allegations and Suspicious of Child Sexual Abuse

The goal of this component is to respond quickly and appropriately to (1) inappropriate or harmful behavior, (2) infractions of child sexual abuse prevention policies and (3) evidence or allegations of child sexual abuse.

- The organization has clear written guidelines on when to report allegations and/or suspicions to authorities and these guidelines are communicated to staff and volunteers.



- The organization has developed a system to track and review allegations and suspicions of child sexual abuse.
- The organization has a listing of phone numbers/agencies where suspicions of child sexual abuse should be made and this listing is readily available to both staff and volunteers.



A2A provides training for youth serving organizations on enhancing their policies and procedures to protect children in their programs. Go to www.a2awisconsin.org for more information.